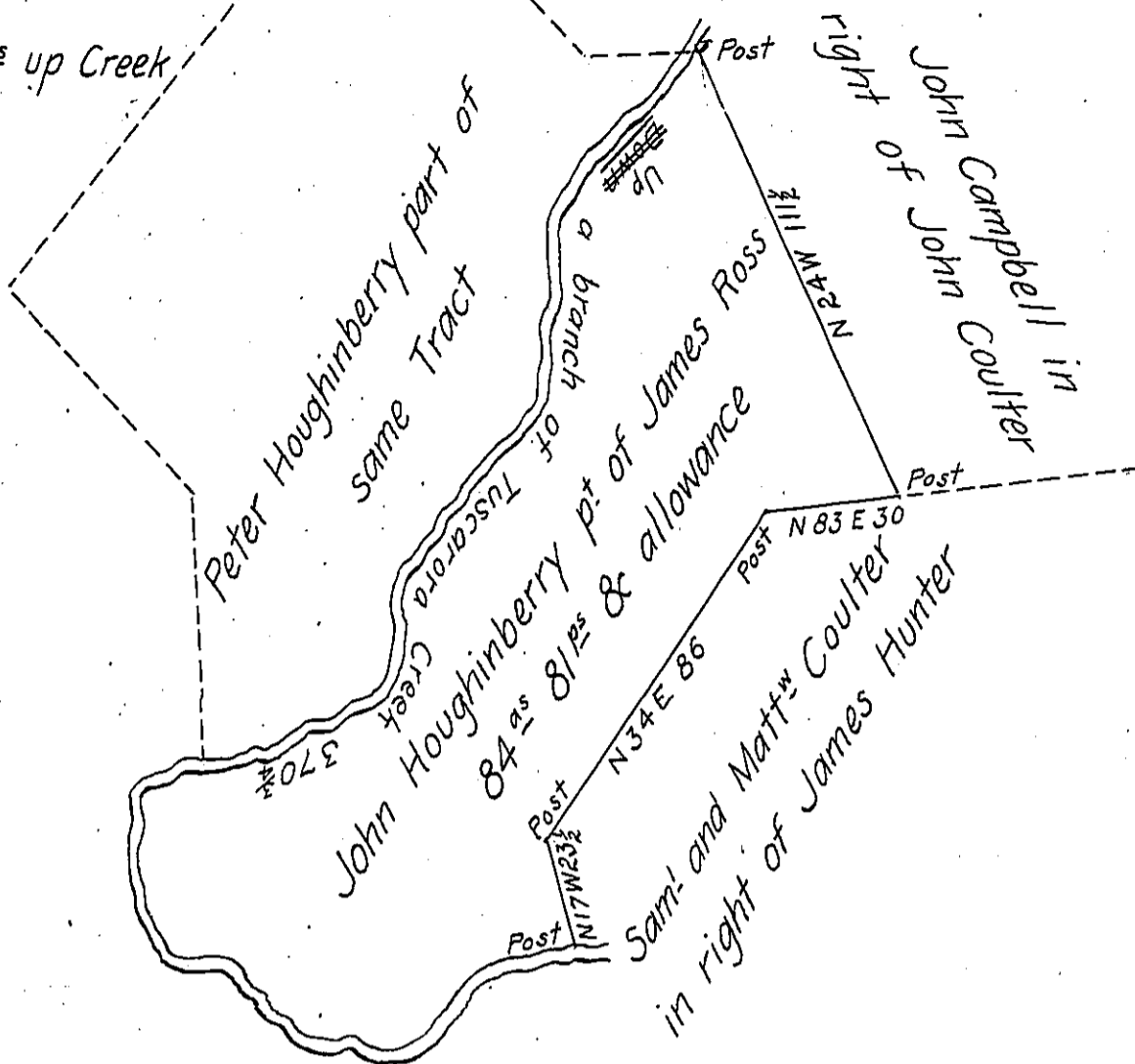


FORM No. 1.

Courses & Dist<sup>s</sup> up Creek

S 47 W	28
S 35 W	19
S 3 W	40 1/2
S 40 1/2 W	33
S 43 W	12
South	12 1/2
S 10 W	16
S 57 W	19
S 77 W	4 1/2
S 4 W	26
S 26 E	20
S 81 E	13
S 39 E	18
S 83 1/2 E	26
N 64 E	9
N 37 E	10 1/4
N 67 1/2 E	22
S 87 1/2 E	5
<hr/>	
	370 3/4



The above described Tract of Eighty four Acres and Eighty one perches and the allowance of six per cent for Roads &ca. is part of a larger Tract of 157<sup>as</sup> 133<sup>ps</sup> & all<sup>ce</sup> situate in Fannet- Township Franklin County (formerly Cumberland) which was Surveyed 16<sup>th</sup> of November 1767 In pursuance of a Warrant, Granted to James Ross bearing date the 18<sup>th</sup> of April 1763 as per certificate of Return Survey from the Land Office — Resurveyed and divided off the above part the 8<sup>th</sup> of May 1822.

W<sup>m</sup> S. Davis D.S.

To Samuel Cochran Esq<sup>r</sup> }  
 Surveyor Gen<sup>l</sup> of Penn<sup>a</sup> }

IN TESTIMONY that the above is a copy of the original remaining on file in the Department of Internal Affairs of Pennsylvania, made conformably to an Act of Assembly approved the 16th day of February, 1833, I have hereunto set my Hand and caused the Seal of said Department to be affixed at Harrisburg, this fourth day of September 1906.

*James D. Johnson*  
 Secretary of Internal Affairs.